



advanced FLOW engineering BladeRunner – Hot Side Charge Pipe Kit

Instruction Manual P/N: 46-20688-B

Make: Ford

Model: F-250

Year: 2023-2024

Engine: V8-6.7L (td)

Make: Ford

Model: F-350

Year: 2023-2024

Engine: V8-6.7L (td)



- Please read the entire instruction manual before proceeding.
- Ensure all components listed are present.
- For technical support please call 951-493-7185.
- Ensure you have all necessary tools before proceeding.
- Do not attempt to work on your vehicle when the engine is hot.
- Retain factory parts for future use.

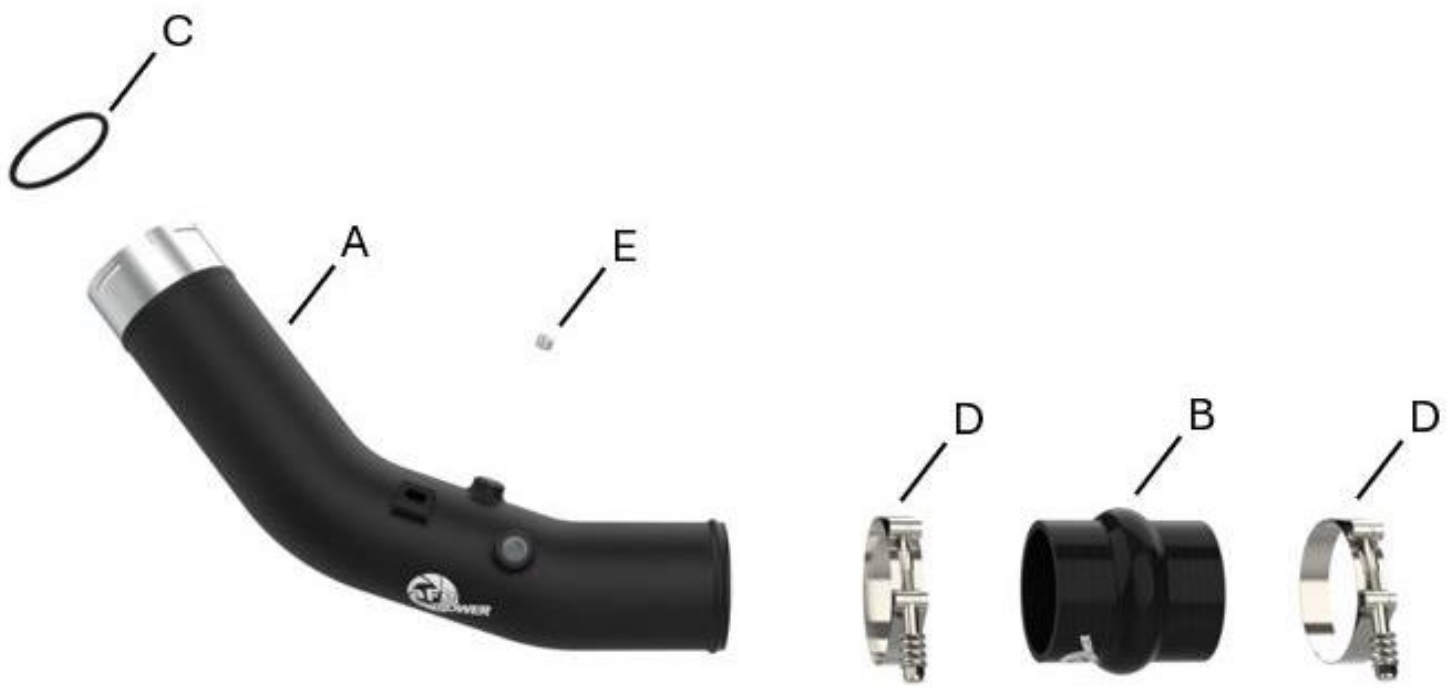
Label	Qty.	UoM	Description	Part Number
A	1	Ea.	Tube, Hot Side: 46-20688	05-61422B
B	1	Ea.	Coupling, Silicone Hump: 3"ID x 4"L	05-60012
C	1	Ea.	O-Ring, 60mm ID x 4mm W	05-60615
D	2	Ea.	Clamp, Spring Loaded T-Bolt: (3.25" - 3.50") (ss)	03-50530
E	1	Ea.	Plug, Hex Hd Socket: 1/8" NPT (Zn Plt)	03-50029

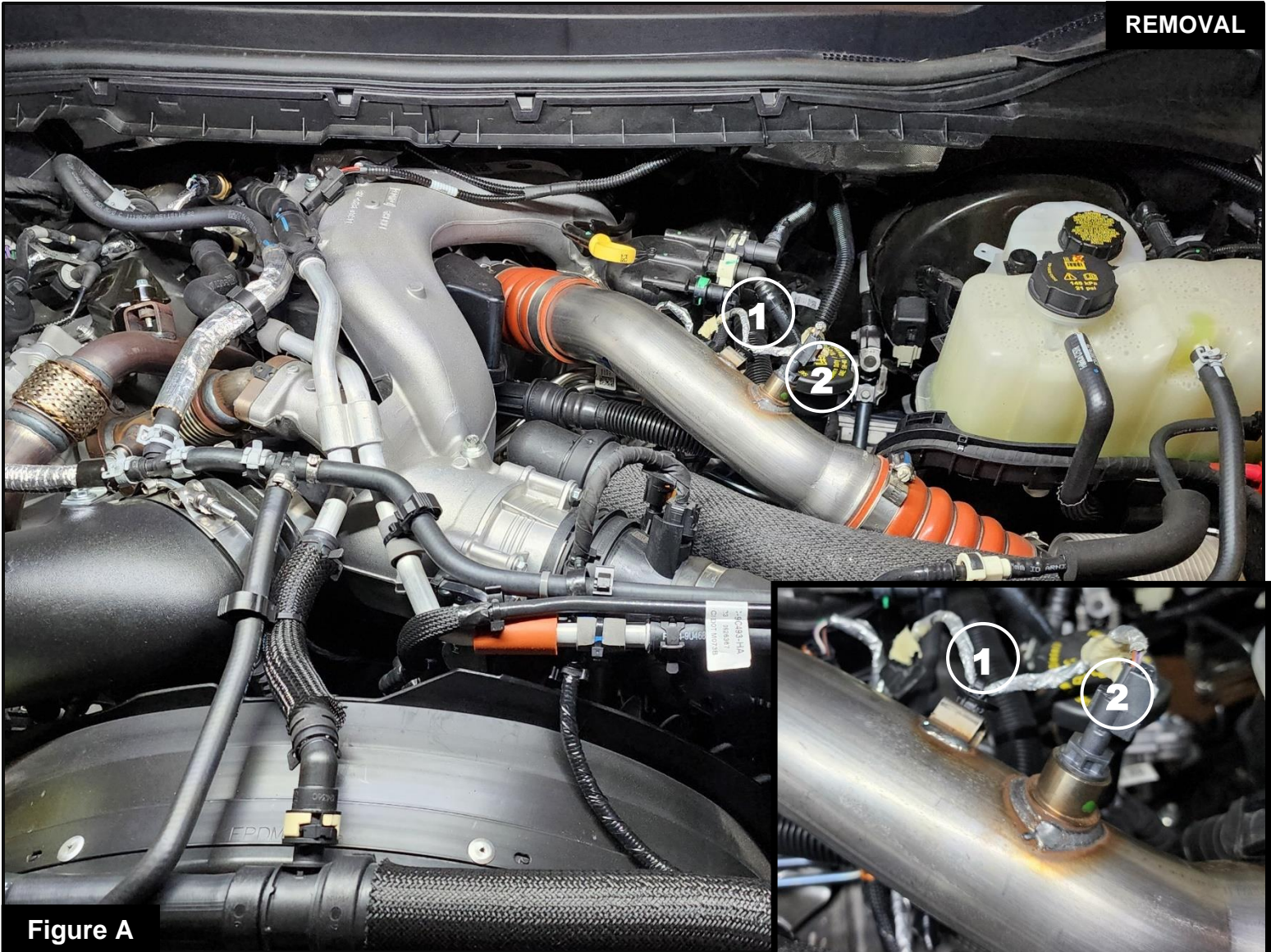
Installation will require the following tools:

7mm, 10mm, 11mm sockets , 4mm allen, 3/16" allen, extensions, ratchet, flat screwdriver, pick, teflon tape, grease.

Warranty Information available at <https://afepower.com/contact#warranty>

Emissions Disclaimer: This product is not currently CARB exempt and is not available for purchase in California or for use on any vehicle registered with the California Department of Motor Vehicles.



**Figure A****Refer to Figure A for Steps 1-3**

Step 1: Disconnect the negative battery cables.

Step 2: Release the wiring harness from the mount on the factory hot side charge pipe (1).

Step 3: Release the security tab, by sliding it up, then disconnect the temperature sensor connector from the sensor on the factory hot side charge pipe (2).

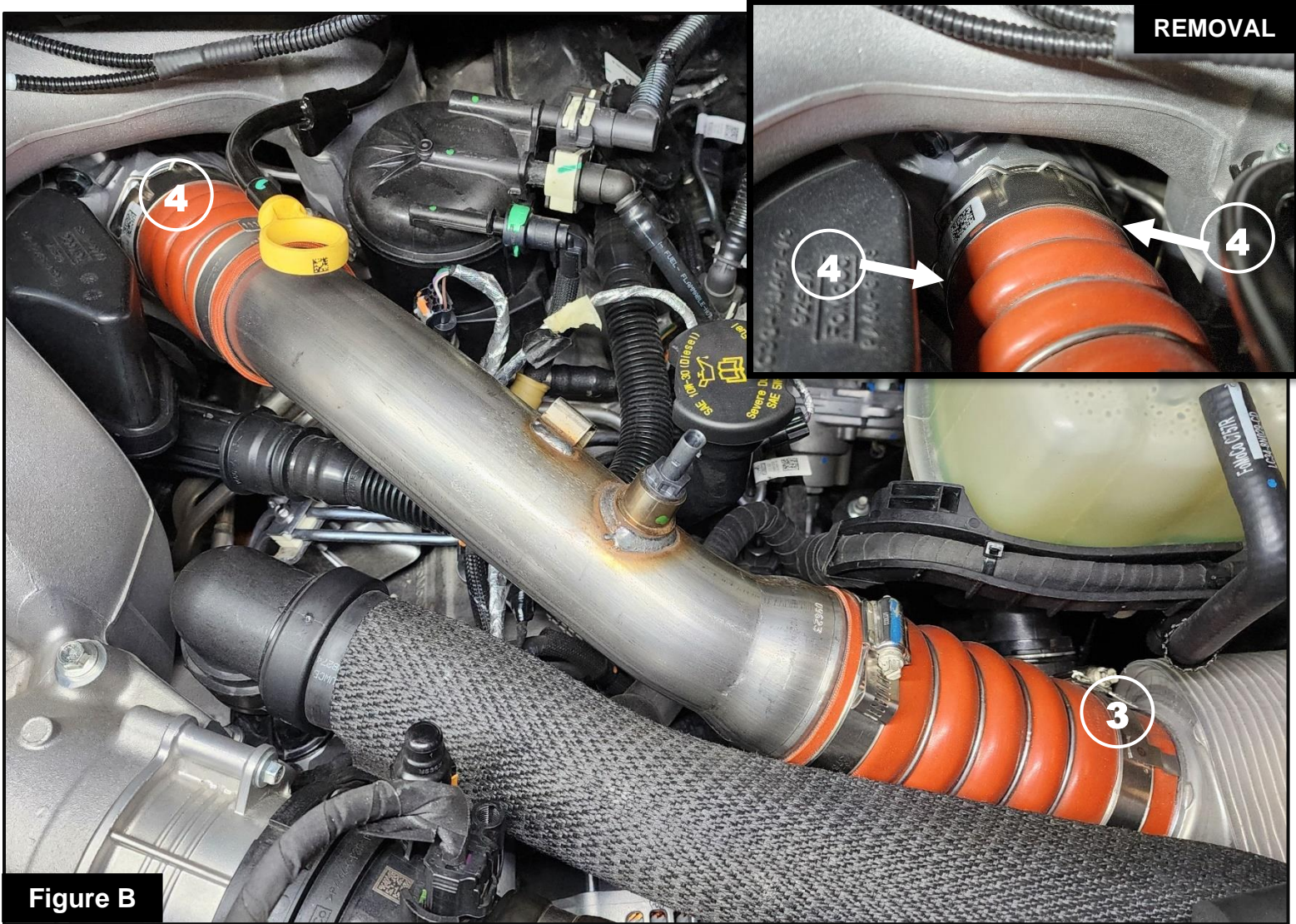
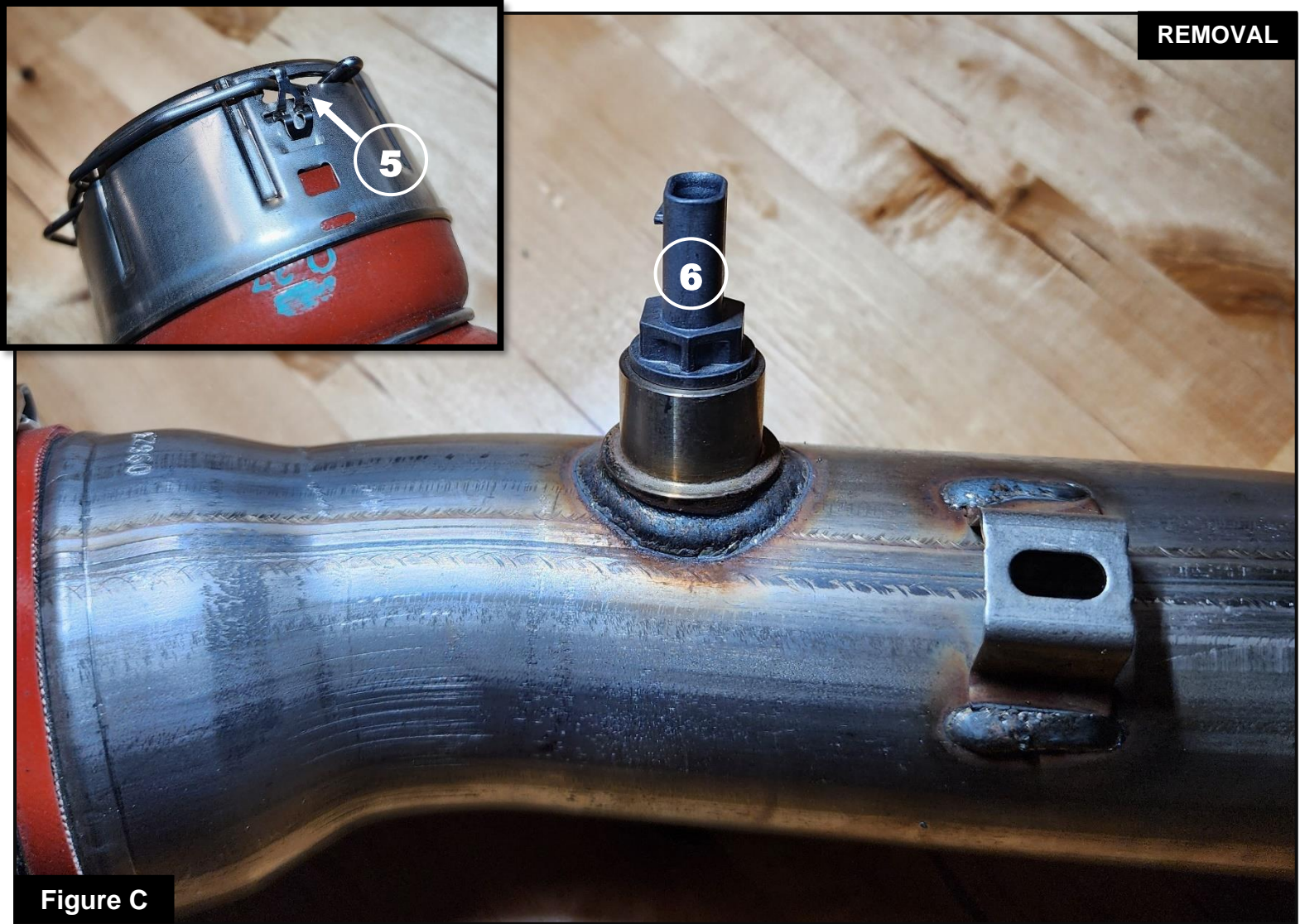


Figure B

Refer to Figure B for Steps 4-5

Step 4: Loosen the clamp securing the hot side charge pipe onto the intercooler inlet (3)

Step 5: Expand the retaining clip securing the hot side charge pipe onto the turbo outlet, then remove the factory hot side charge pipe from the vehicle (4)

**Figure C**

Refer to Figure C for Steps 6-7

Step 6: Remove the factory retaining clip from the factory hot side charge pipe (5). Do this by gently lifting the tabs up on each side and sliding the clip out of the slots, set aside for later use.

Step 7: Remove the factory temperature sensor from the hot side charge pipe (6) set aside for use later.

**Figure D****Refer to Figure D for Steps 8-10**

Note: Be sure to use thread sealant on the plug or sensor to prevent any leaking

Step 8: If you are not using any aftermarket sensors, install the supplied 1/8" NPT plug into the smaller threaded fitting on the aFe POWER hot side charge pipe (7).

Note: Be sure to lubricate the O-ring with grease to prevent it from tearing during installation.

Step 9: Install the temperature sensor from the factory hot side charge pipe into the aFe POWER hot side charge pipe (8) do not over tighten.

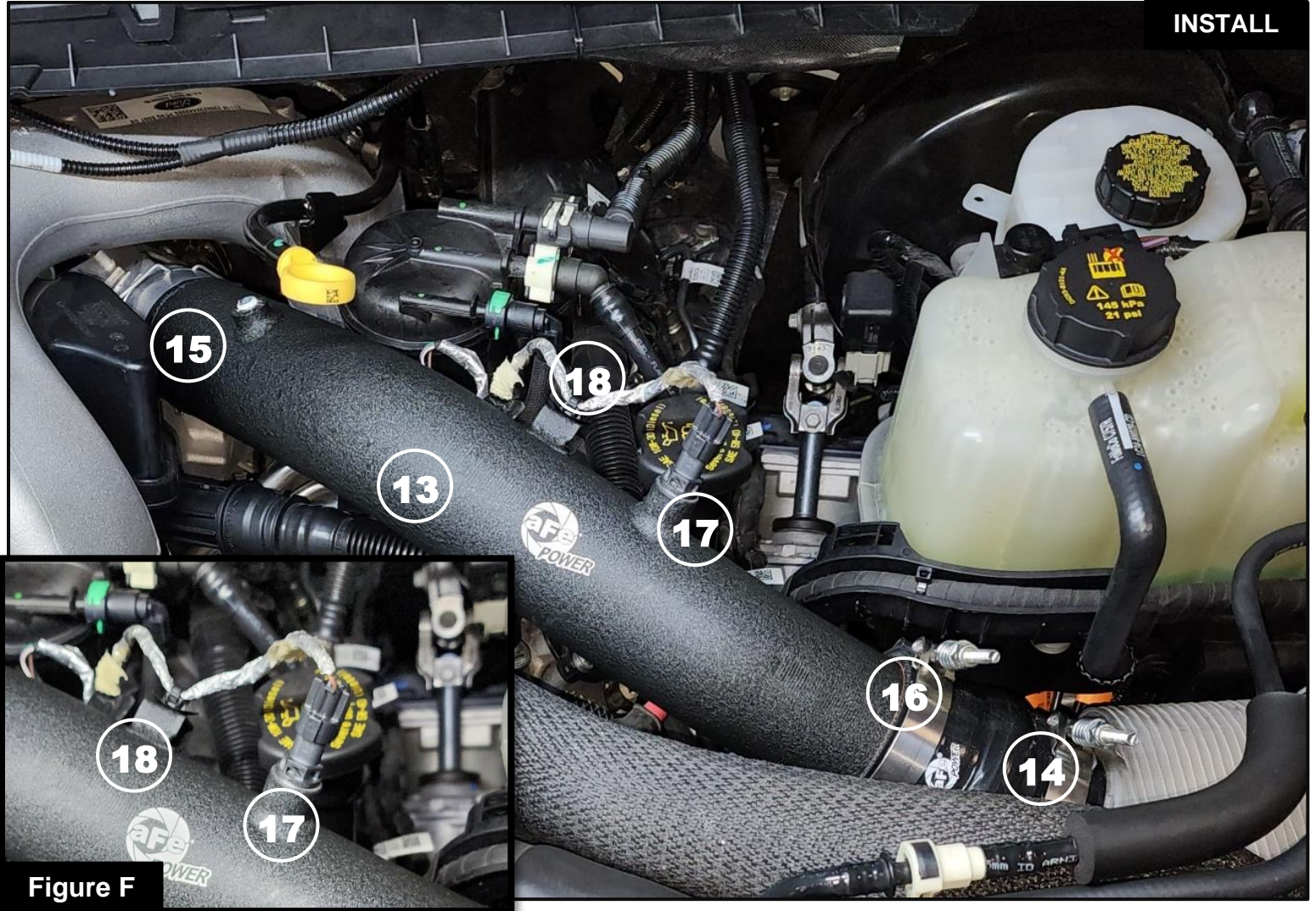
Step 10: Install the supplied aFe POWER silicone hump coupling, 3"ID x 4"L, with one supplied 3.25" spring loaded spring loaded T-Bolt clamp onto the aFe POWER hot side charge pipe (9) do not tighten the clamp yet.

**Figure E****Refer to Figure E for Steps 11-12**

Note: Be sure to lubricate the O-ring with grease to prevent it from tearing during installation.

Step 11: Install the 60mm ID x 4mm W O-ring into the groove on the inside of the supplied aFe POWER hot side charge pipe ⑩

Step 12: Install the factory retaining clip from Step 6 onto the aFe POWER hot side charge pipe ⑪



Refer to Figure F for Steps 13-19

Note: Be sure to thoroughly clean all oil residue off of the connections before installing any of the aFe couplings onto the vehicle.

- Step 13: Place one 3.25" spring loaded T-Bolt clamp onto intercooler inlet, then install the aFe POWER hot side charge pipe into the vehicle starting at the turbo outlet but do not allow the retaining clip to snap into place (13)
- Step 14: Install the coupler onto the intercooler inlet and tighten the clamp to the intercooler (14)
- Step 15: Slide the aFe POWER hot side charge pipe onto the turbo outlet (15) and ensure the retaining clip snaps into place all the way around. Tighten the clamp to the hot side charge pipe (16)
- Step 16: Reconnect the temperature sensor electrical connector to the sensor (17)
- Step 17: Secure the wire harness to the mount on the aFe POWER hot side charge pipe (18)
- Step 18: Reconnect the negative battery cables.
- Step 19: Install is now complete.

NOTE: Check all clamps, and connectors are secure after 100-200 miles



This Page Was Left Intentionally Blank



This Page Was Left Intentionally Blank



advanced FLOW engineering, inc.

Corona, CA 92879

<https://afepower.com/contact>